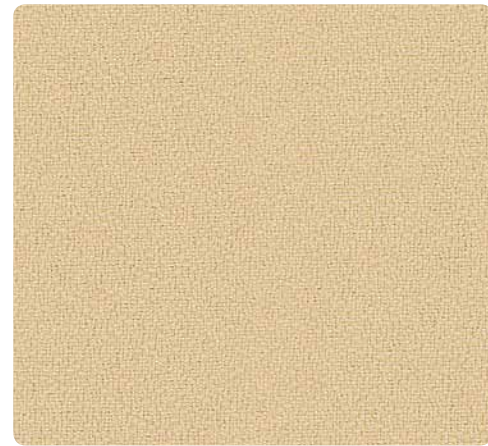


CONTRACTOR ACOUSTICS

Basic



Anchoage 2335
Birch 2129



Framework 2762
Chamois 2552



Framework 2762
Sandy Pebble 2554



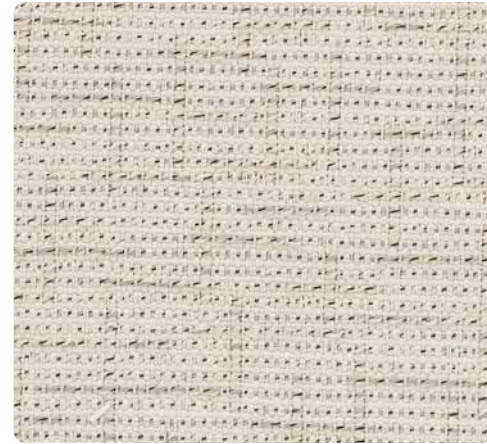
Anchoage 2335
Eucalyptus 2047



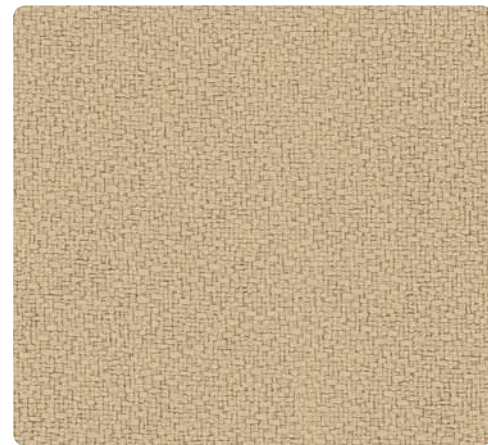
Coastline 3495
Beach Glass 032



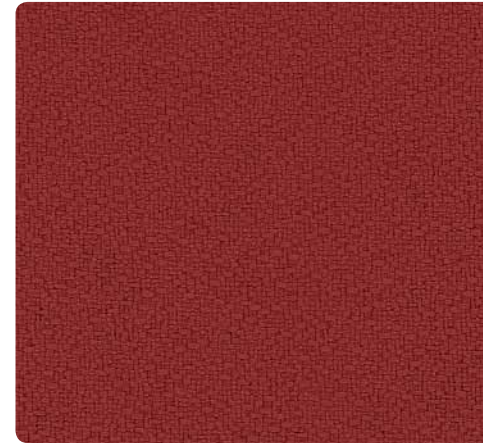
Anchoage 2335
Willow 2028



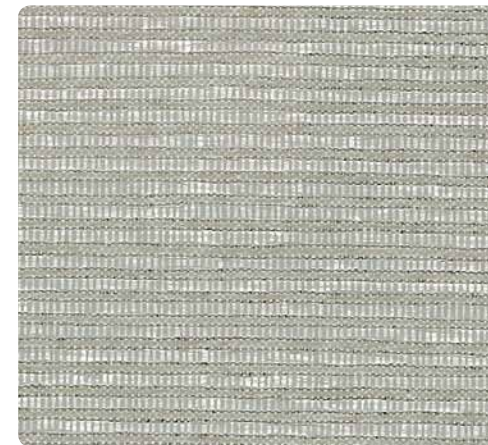
Crosstown 2526
Birch 031



Anchoage 2335
Vanilla 2130



Anchoage 2335
Poppy 2091



Otto 2670
Platinum 010



Anchoage 2335
Green Apple 2087



Anchoage 2335
Cumin 2050



FR701 2100
Black 408



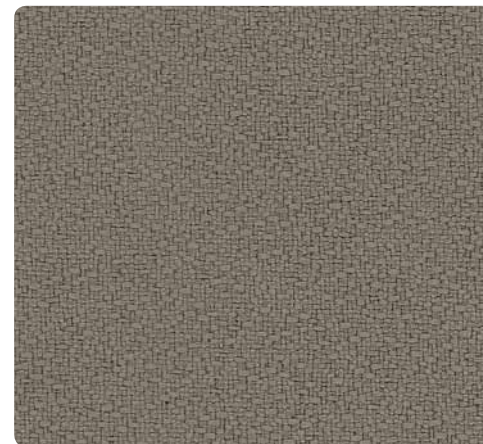
Anchoage 2335
Onyx 2016



Anchoage 2335
Goldenrod 2090



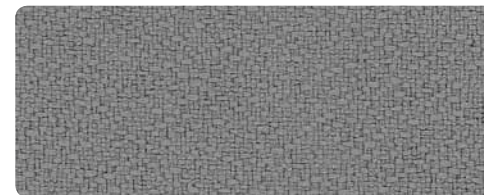
Anchoage 2335
Sunshine 2082



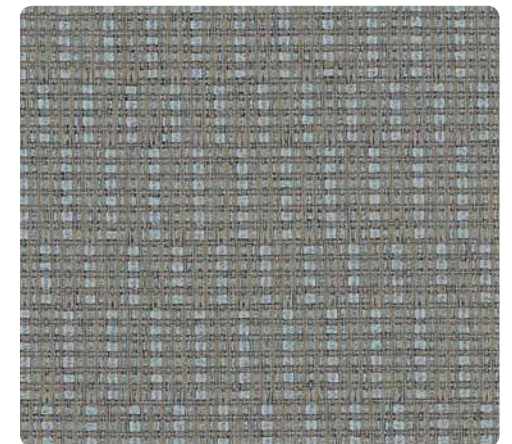
Anchoage 2335
Goose 2049



Anchoage 2335
Cobalt 2045



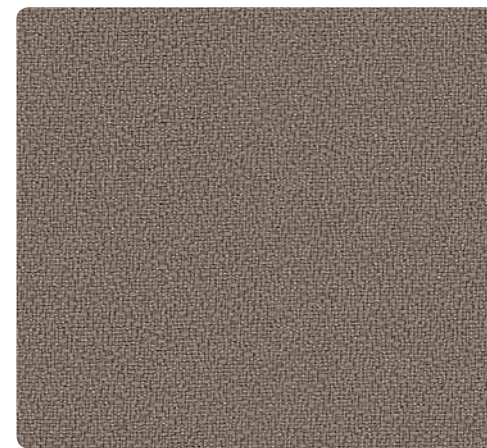
Anchoage 2335
Asteroid 2053



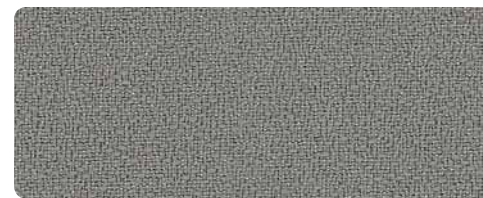
Sprite 2671
Sky 033



Anchoage 2335
Coffee Bean 2083



Framework 2762
Stone 2688



Framework 2762
Dove Gray 2689







Anchoage 2335
Lapis 2094



Belgrade 4052
Liberty 025

Specifications	Anchorage 2335*	Belgrade 4052*	Coastline 3495*	Crosstown 2526*	FR701® 2100*	Framework 2762	Otto 2670	Sprite 2671*
Content	35% post-consumer recycled polyester 65% pre-consumer recycled polyester	95% post-consumer recycled polyester 5% pre-consumer recycled polyester	34% post-consumer recycled polyester 66% pre-consumer recycled polyester	23% post-consumer recycled polyester 77% pre-consumer recycled polyester	100% post-consumer recycled polyester	100% polyester	31% post-consumer recycled polyester 34% pre-consumer recycled polyester 35% polypropylene	5% post-consumer recycled polyester 95% pre-consumer recycled polyester
Weight	15.0 ± 1.0 oz./lin. yd.	18.5 ± 1.0 oz./lin. yd.	12.2 ± 1.0 oz./lin. yd.	13.6 ± 1.0 oz./lin. yd.	16.0 ± 0.5 oz./lin. yd.	9.5 ± 0.5 oz./lin. yd.	13.5 ± 0.5 oz./lin. yd.	10.8 ± 0.5 oz./lin. yd.
Width	66" min. useable	66" min. useable	66" min. useable	66" min. useable	66" min. useable	66" min. useable	66" min. useable	66" min. useable
Repeat	none	none	16" vert., 16.6" horiz.	12.5" vert., 16.2" horiz.	none	none	none	.83" vert., .26" horiz.
Treatment	none	none	none	none	none	none	polyester binder	polyester binder
Cleaning Code	W-S	W-S	W-S	W-S	W-S	W-S	W-S	W-S

Performance

 Colorfastness to Light (AATCC 16 Option 3)	Grade 4 min. at 40 hrs.	Grade 4 min. at 40 hrs.	Grade 4 min. at 40 hrs.	Grade 4 min. at 40 hrs.	Grade 4 min. at 40 hrs.	Grade 4 min. at 40 hrs.	Grade 4 min. at 40 hrs.	Grade 4 min. at 40 hrs.
 Colorfastness to Crocking (AATCC 8)	Grade 4 min. dry & Grade 3 min. wet	Grade 4 min. dry & Grade 3 min. wet	Grade 4 min. dry & Grade 3 min. wet	Grade 4 min. dry & Grade 3 min. wet	Grade 4 min. dry & Grade 3 min. wet	Grade 4 min. dry & Grade 3 min. wet	Grade 4 min. dry & Grade 3 min. wet	Grade 4 min. dry & Grade 3 min. wet
 Breaking Strength (ASTM D5034)	275 lbf min. warp and fill	175 lbf min. warp and fill	220 lbf min. warp 100 lbf min. fill	250 lbf min. warp 150 lbf min. fill	150 lbf min. warp and fill	150 lbf min. warp 125 lbf min. fill	200 lbf min. warp 175 lbf min. fill	175 lbf min. warp and fill
 Flammability (ASTM E84)	Class I or A	Class I or A	Class I or A	Class I or A	Class I or A	Class I or A	Class I or A	Class I or A
Acoustic Performance NRC Rating (ISO 10534-2)	.85	.95	.90	.95	.95	.90	.85	.95

Miscellaneous




Colors may vary slightly between dye lots.
These are directional fabrics except FR701.
Application testing of these products is recommended.



Visit guilfordofmaine.com for complete specs and samples.

CONTRACTOR ACOUSTICS

www.contractoracoustics.com

- *  Terratec is a registered trademark of True Textiles, Inc. and designates fabrics that are made from 100% recycled or compostable material using increasingly sustainable manufacturing practices to produce a high quality product that is recyclable at the end of its useful life. (terratec.com)
 - *  CO₂ emissions from 100% of the electricity used by the manufacturer to produce these products have been measured and offset in accordance with The CarbonNeutral Protocol.
 - *  These patterns are included in the underwriters laboratory panel fabric recognition program. Additional testing of these U.L. recognized component fabrics is not required on approved panels from participating manufacturers.
- † ACT® registered certification marks.