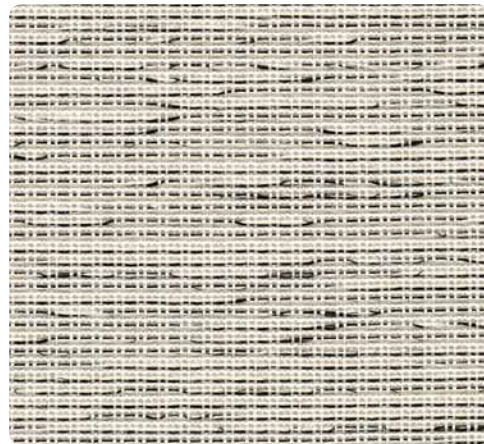


CONTRACTOR ACOUSTICS

Premium



Sand 2658
Ivory 021



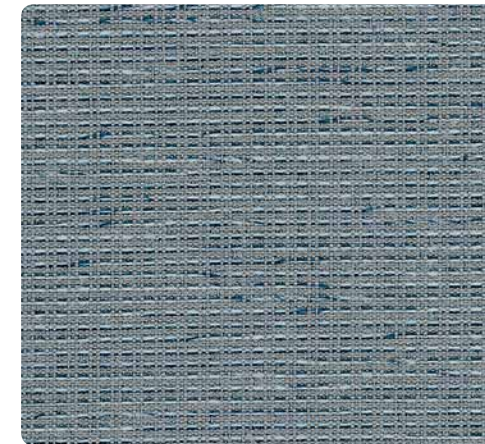
Tempest 2120
Zebra 015



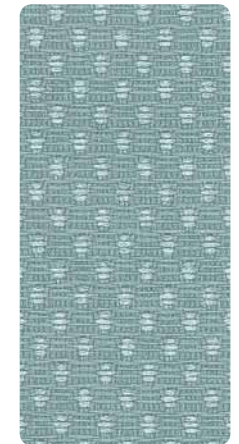
Tempest 2120
Silk 045



Sand 2658
Steel 011



Tempest 2120
Starlight 023



Streetwise 2721
Commuter 1887



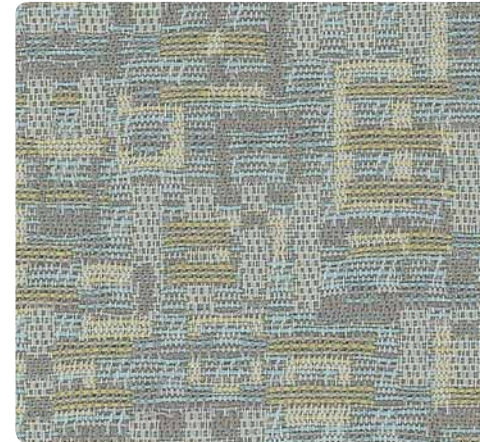
Cosmos 2655
Sunspot 021



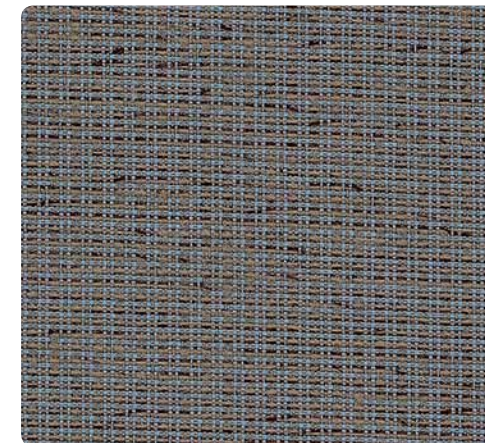
Lily Pad 2318
Custard 040



Lily Pad 2318
Aloe 050



Block Party 2538
Isle 010



Tempest 2120
Flint 026



Tempest 2120
Full Stream 012



Sand 2658
Sunflow 030



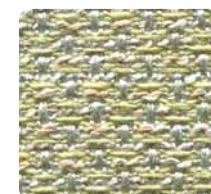
Tempest 2120
Sandstorm 040



Sand 2658
Spring 022



Tempest 2120
Dragonfly 020



Phone Tag 2314
Clover 011



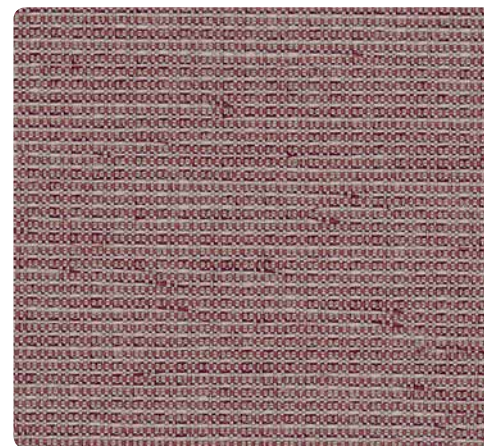
Route 66 2701
Eucalyptus 050



Auster 2537
Lichen 041



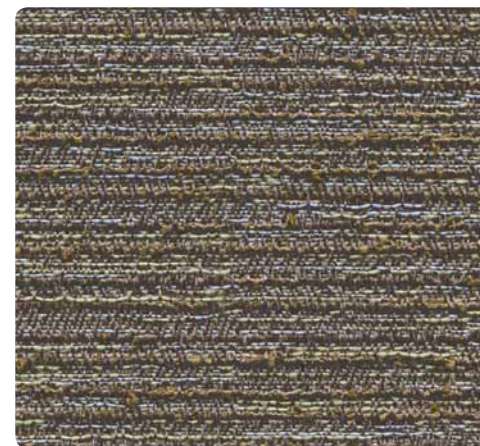
Sand 2658
Birch 010



Tempest 2120
Auburn 022



Tempest 2120
Hemp 047



Sand 2658
Woodland 070







Sand 2658
Wheat 020



Sand 2658
Cocoa 071

Specifications	Auster 2537*	Block Party 2538*	Cosmos 2655*	Lily Pad 2318*	Phone Tag 2314*	Route 66 2701	Sand 2658*	Streetwise 2721*	Tempest 2120*
Content	29% post-consumer recycled polyester 71% pre-consumer recycled polyester	26% post-consumer recycled polyester 74% pre-consumer recycled polyester	100% post-consumer recycled polyester	20% post-consumer recycled polyester 80% pre-consumer recycled polyester	79% post-consumer recycled polyester 21% pre-consumer recycled polyester	20% post-consumer recycled polyester 50% pre-consumer recycled polyester 30% polypropylene	100% post-consumer recycled polyester	22% post-consumer recycled polyester 78% pre-consumer recycled polyester	27% post-consumer recycled polyester 73% pre-consumer recycled polyester
Weight	11.4 ± 1.0 oz./lin. yd.	12.6 ± 1.0 oz./lin. yd.	12.0 ± 0.5 oz./lin. yd.	12.3 ± 1.0 oz./lin. yd.	14.0 ± 1.0 oz./lin. yd.	13.9 ± 1.0 oz./lin. yd.	16.0 ± 0.5 oz./lin. yd.	13.0 ± 1.0 oz./lin. yd.	11.3 ± 1.0 oz./lin. yd.
Width	66" min. useable	66" min. useable	66" min. useable	66" min. useable	66" min. useable	66" min. useable	66" min. useable	66" min. useable	66" min. useable
Repeat	16" vert., 13.9" horiz.	12.9" vert., 13.9" horiz.	12.5" vert., 16.3" horiz.	16.7" vert., 13.2" horiz.	none	none	none	none	none
Cleaning Code	W-S	W-S	W-S	W-S	W-S	W-S	W-S	W-S	W-S

Performance	Auster 2537*	Block Party 2538*	Cosmos 2655*	Lily Pad 2318*	Phone Tag 2314*	Route 66 2701	Sand 2658*	Streetwise 2721*	Tempest 2120*
 Colorfastness to Light (AATCC 16 Option 3)	Grade 4 min. at 40 hrs.	Grade 4 min. at 40 hrs.	Grade 4 min. at 40 hrs.	Grade 4 min. at 40 hrs.	Grade 4 min. at 40 hrs.	Grade 4 min. at 40 hrs.	Grade 4 min. at 40 hrs.	Grade 4 min. at 40 hrs.	Grade 4 min. at 40 hrs.
 Colorfastness to Crocking (AATCC 8)	Grade 4 min. dry & Grade 3 min. wet	Grade 4 min. dry & Grade 3 min. wet	Grade 4 min. dry & Grade 3 min. wet	Grade 4 min. dry & Grade 3 min. wet	Grade 4 min. dry & Grade 3 min. wet	Grade 4 min. dry & Grade 3 min. wet	Grade 4 min. dry & Grade 3 min. wet	Grade 4 min. dry & Grade 3 min. wet	Grade 4 min. dry & Grade 3 min. wet
 Breaking Strength (ASTM D5034)	200 lbf min. warp 140 lbf min. fill	250 lbf min. warp 150 lbf min. fill	250 lbf min. warp 175 lbf min. fill	260 lbf min. warp 120 lbf min. fill	150 lbf min. warp 110 lbf min. fill	250 lbf min. warp 150 lbf min. fill	250 lbf min. warp 150 lbf min. fill	220 lbf min. warp 180 lbf min. fill	180 lbf min. warp 160 lbf min. fill
 Flammability (ASTM E84)	Class I or A	Class I or A	Class I or A	Class I or A	Class I or A	Class I or A	Class I or A	Class I or A	Class I or A
Acoustic Performance NRC Rating (ISO 10534-2)	.90	Not Tested	.90	.95	.95	.90	.90	.95	.95

Miscellaneous




Colors may vary slightly between dye lots.
 These are directional fabrics.
 Application testing of these products is recommended.



Visit guilfordofmaine.com for complete specs and samples.

CONTRACTOR ACOUSTICS

www.contractoracoustics.com

- *  Terratec is a registered trademark of True Textiles, Inc. and designates fabrics that are made from 100% recycled or compostable material using increasingly sustainable manufacturing practices to produce a high quality product that is recyclable at the end of its useful life. (terratec.com)
 - *  CO₂ emissions from 100% of the electricity used by the manufacturer to produce these products have been measured and offset in accordance with The CarbonNeutral Protocol.
 - *  These patterns are included in the underwriters laboratory panel fabric recognition program. Additional testing of these U.L. recognized component fabrics is not required on approved panels from participating manufacturers.
- *ACT® registered certification marks.